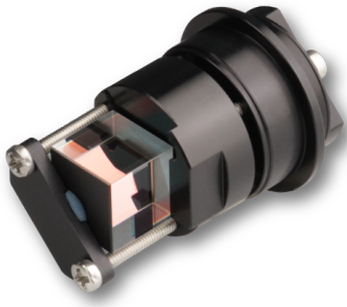


Polarization Beam Splitters 48PM-CC

Beam splitting cube, polarization dependent, in adjustment mount



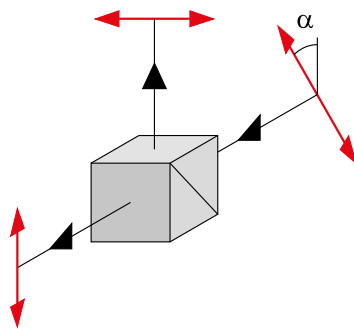
FEATURES

The polarization beam splitters 48PM-CC are polarization dependent cube beam splitters. They have an adjustable mount and are designed to be integrated into the [multicube system](#).

- Beam splitting cube
- Polarization depending
- Extinction ratio up to 10,000 : 1
- Clear aperture up to 7 mm
- Reflection angle 90°
- Broadband AR coating
- In adjustable mount
- Shipped with clamp collar

DESCRIPTION

The polarization beam splitters 48PM-CC are polarization depending cube beam splitters. The splitting ratio is e.g. 50:50 for linearly polarized input radiation with polarization direction $\alpha = 45^\circ$. Maximum transmission is reached at $\alpha = 0^\circ$ (p-pol.) with maximum reflection at $\alpha = 90^\circ$ (s-pol.).



ORDER OPTIONS

| Order Code | Series | Wavelength Range | Extinction | Clear Aperture |
|-----------------------------|-------------------------|------------------|------------|----------------|
| 48PM-CC-A | 48PM-CC | 450 - 700 nm | 10,000 : 1 | Ø 7 mm |
| 48PM-CC-B | 48PM-CC | 750 - 1100 nm | 10,000 : 1 | Ø 7 mm |
| 48PM-CC-C | 48PM-CC | 1100 - 1700 nm | 10,000 : 1 | Ø 7 mm |
| 48PM-CC-W | 48PM-CC | 450 - 1000 nm | 10,000 : 1 | Ø 7 mm |
| 48PM-CC-V | 48PM-CC | 390 - 480 nm | 10,000 : 1 | Ø 3.5 mm |
| 48PM-CC-RGB | 48PM-CC | 400 - 700 nm | 200 : 1 | Ø 3.5 mm |

DOWNLOADS



[980120190200.pdf \(Dimensional drawing\)](#)

RELATED PRODUCTS

MULTICUBE SYSTEM

Multicube-Components and Systems

This is a printout of the page <https://sukhamburg.com/products/fiberoptics/multicube/optics/beamsplitter/pbs.html> from 8/11/2022

CONTACT

For more information please contact:

Schäfter + Kirchhoff GmbH

Kieler Str. 212

22525 Hamburg

Germany

Tel: +49 40 85 39 97-0

Fax: +49 40 85 39 97-79

info@sukhamburg.de

www.sukhamburg.com

LEGAL NOTICE

Copyright 2020 Schäfter+Kirchhoff GmbH. All rights reserved.

Text, image, graphic, sound, video and animation files and their arrangement on Schäfter+Kirchhoff GmbH webpages are protected by copyright and other protective laws. The content may not be copied for commercial use or reproduced, modified or used on other websites. [\[more\]](#)